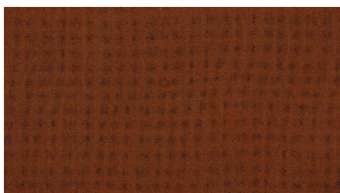
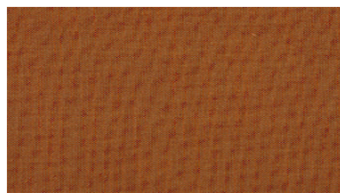




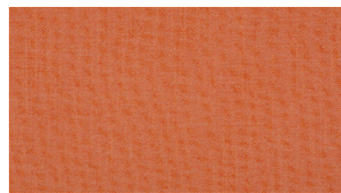
KHAKI
Möbelstoff



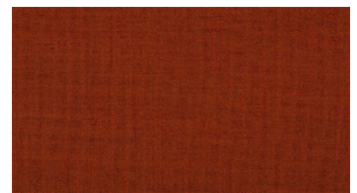
3035



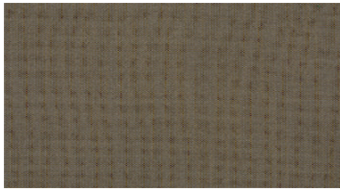
3044



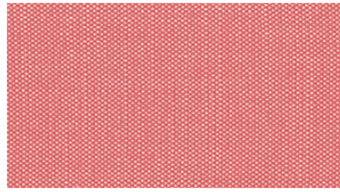
3234



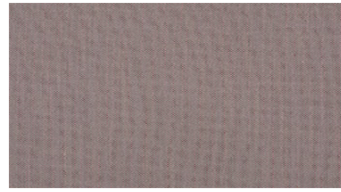
3236



3550



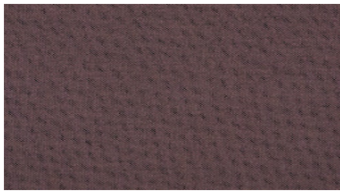
3617



3651



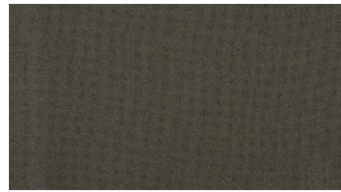
3745



3952



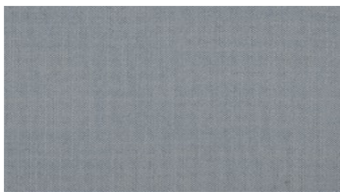
4163



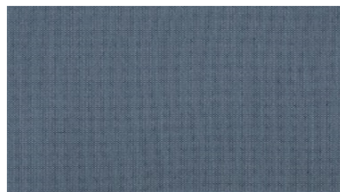
4360



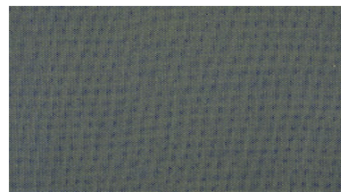
4372



4433



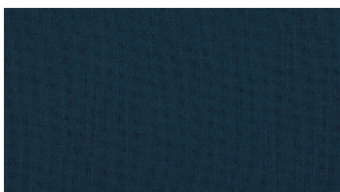
4444



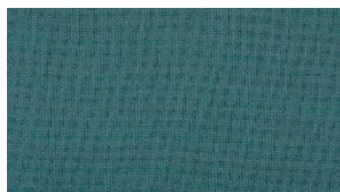
4452



4550



4554



4653



4745



4760

KHAKI

Möbelstoff

Breite: 140 cm
Gewicht: 360 G/M²
Material: Trevira CS 100%
Einlaufen: 2 %

Color fastness:
Against dry rubbing according to EN ISO 105-X12:
 - ≥4 (Scale 1-5)
Gegen Licht nach EN ISO 105-B02
 - ≥5 (Skala 1-8)
Against wet rubbing according to EN ISO 105-X12:
 - 4 (Scale 1-5)

Scheuerfestigkeit:
Martindale (Nach: EN ISO 12947-2):
 - 50000 Touren

Wartungsanweisungen:



For further information:

Svensson
 511 82 Kinna, Sweden

T: +46 320 20 92 00
 F: +46 320 21 10 10
 E: info@ludvigsvensson.com

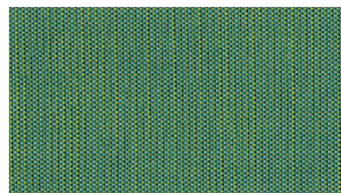




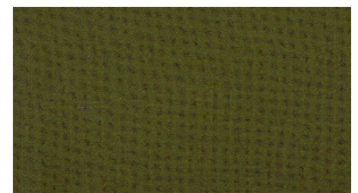
5445



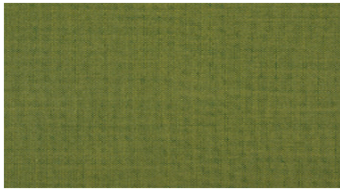
5451



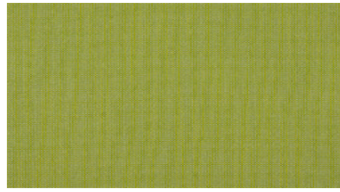
5535



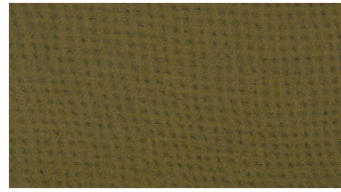
5863



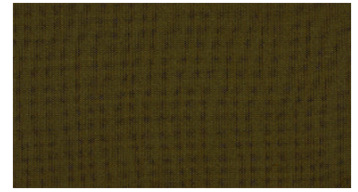
6043



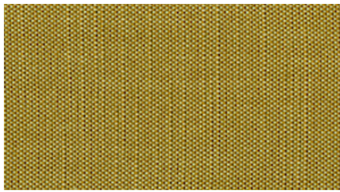
6235



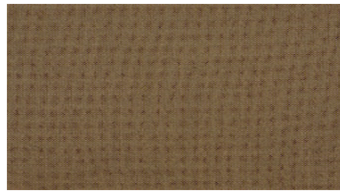
6252



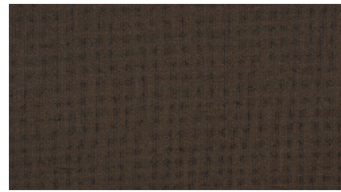
6272



6544



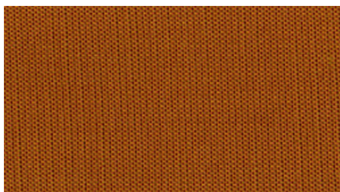
6560



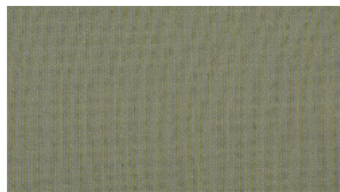
6662



6750



6835



6841



8500

KHAKI

Möbelstoff

Breite: 140 cm
Gewicht: 360 G/M²
Material: Trevira CS 100%
Einlaufen: 2 %

Color fastness:
Against dry rubbing according to EN ISO 105-X12:
 - ≥4 (Scale 1-5)
Gegen Licht nach EN ISO 105-B02
 - ≥5 (Skala 1-8)
Against wet rubbing according to EN ISO 105-X12:
 - 4 (Scale 1-5)

Scheuerfestigkeit:
Martindale (Nach: EN ISO 12947-2):
 - 50000 Touren

Wartungsanweisungen:



For further information:

Svensson
 511 82 Kinna, Sweden

T: +46 320 20 92 00
 F: +46 320 21 10 10
 E: info@ludvigsvensson.com

