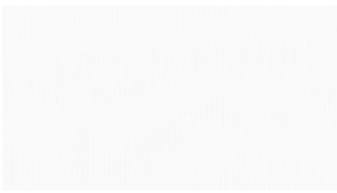


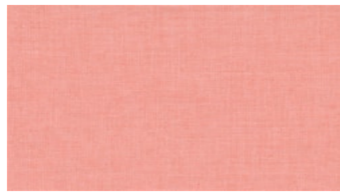


**NOVA**  
Hängende Textilien

 **svensson**



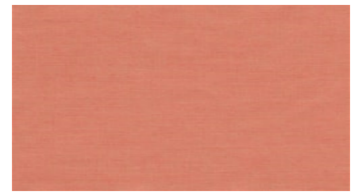
1500



3006



3206



3226



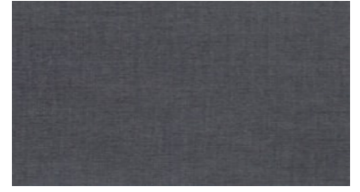
3331



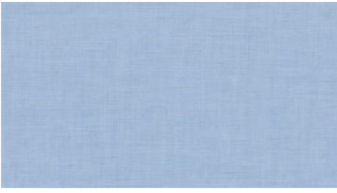
3500



3962



4281



4323



4333



4370



4422



4453



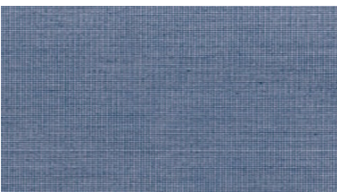
4461



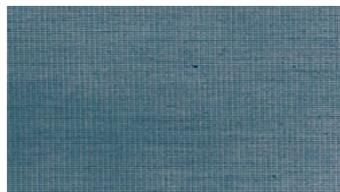
4463



4521



4547



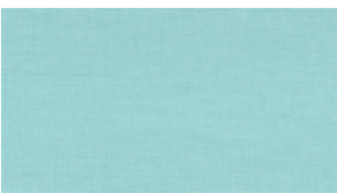
4844



4863



4945



5013



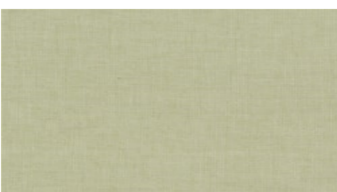
5211



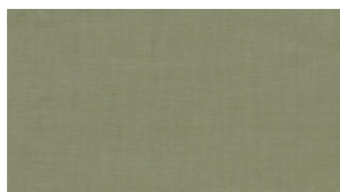
5621



6212



6223



6252



6501



6503



6522



6620



6650



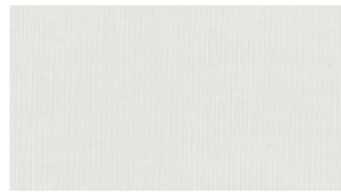
6782



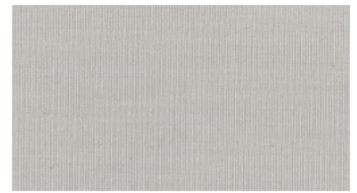
7788



8000



8030



8330



8340



8440



8660



8700



8800

## NOVA Hängende Textilien

**Breite:** 300 cm  
**Gewicht:** 110 G/M<sup>2</sup>  
**Material:** Trevira CS 100%  
**Einlaufen:** 2 %

**Wartungsanweisungen:**



**Farbechtheit:**  
*Gegen Licht nach EN ISO 105-B02*  
- ≥5 (Skala 1-8)  
*Waschbeständig nach EN ISO 105-C06*  
- ≥5 (Scale 1-5)

**For further information:**

Svensson  
511 82 Kinna, Sweden

T: +46 320 20 92 00  
F: +46 320 21 10 10  
E: [info@ludvigsvensson.com](mailto:info@ludvigsvensson.com)

