

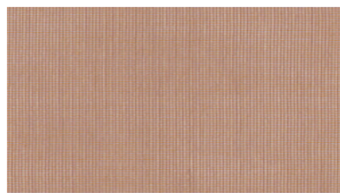


**AIRY**  
Hängende Textilien

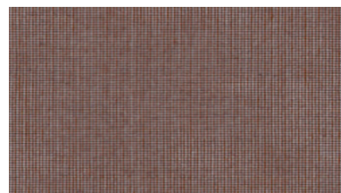
 **svensson**



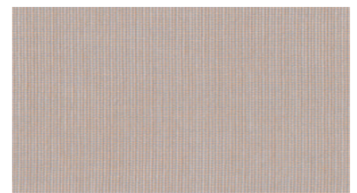
3010



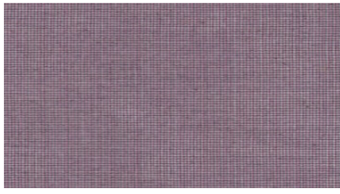
3243



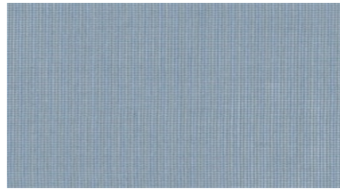
3463



3631



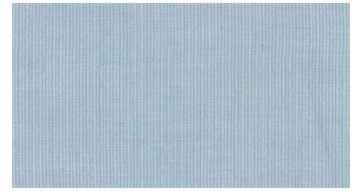
4053



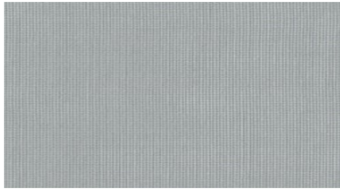
4333



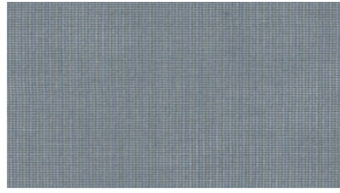
4410



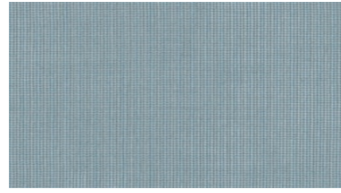
4422



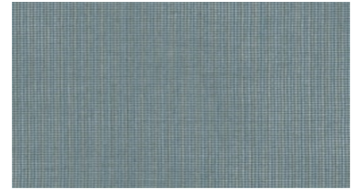
4441



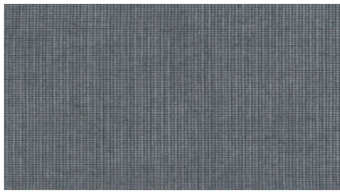
4461



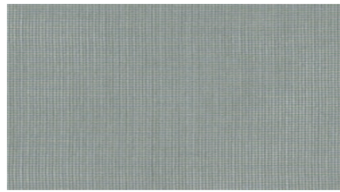
4542



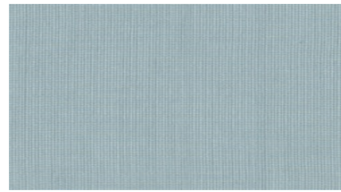
4652



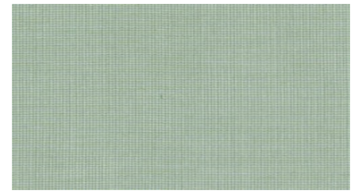
4672



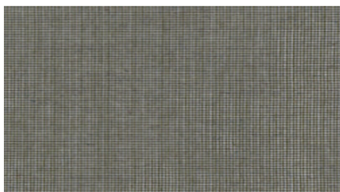
4851



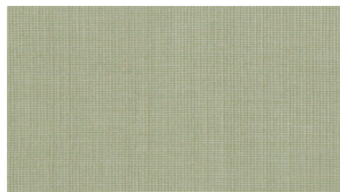
5031



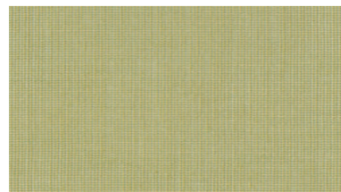
5631



5681



6242



6444



6531

## AIRY Hängende Textilien

**Breite:** 300 cm  
**Gewicht:** 115 G/M<sup>2</sup>  
**Material:** Trevira CS 100%  
**Einlaufen:** 2 %

### Wartungsanweisungen:



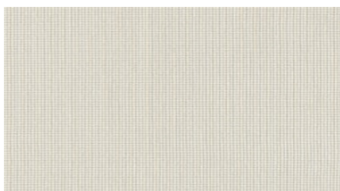
**Farbechtheit:**  
*Gegen Licht nach EN ISO 105-B02*  
- ≥5 (Skala 1-8)  
*Waschbeständig nach EN ISO 105-C06*  
- ≥5 (Scale 1-5)

### For further information:

Svensson  
511 82 Kinna, Sweden

T: +46 320 20 92 00  
F: +46 320 21 10 10  
E: [info@ludvigsvensson.com](mailto:info@ludvigsvensson.com)

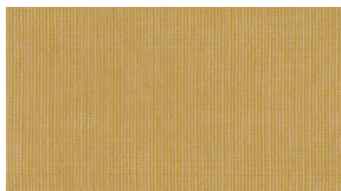




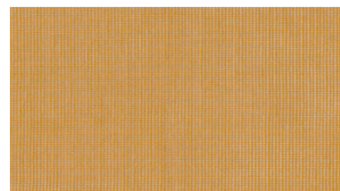
6711



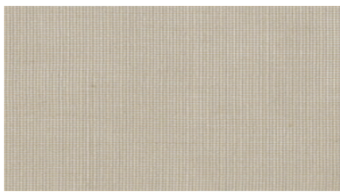
6723



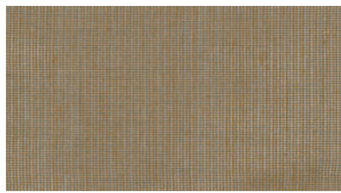
6736



6827



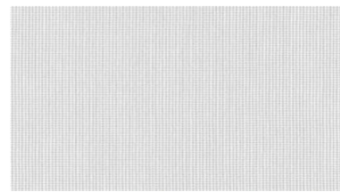
6841



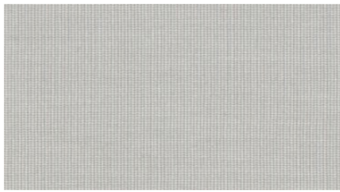
6862



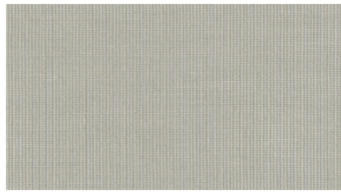
6920



8000



8220



8330

## AIRY Hängende Textilien

**Breite:** 300 cm  
**Gewicht:** 115 G/M<sup>2</sup>  
**Material:** Trevira CS 100%  
**Einlaufen:** 2 %

### Wartungsanweisungen:



**Farbechtheit:**  
Gegen Licht nach EN ISO 105-B02  
- ≥5 (Skala 1-8)  
Washbeständig nach EN ISO 105-C06  
- ≥5 (Scale 1-5)

### For further information:

Svensson  
511 82 Kinna, Sweden

T: +46 320 20 92 00  
F: +46 320 21 10 10  
E: info@ludvigsvensson.com

