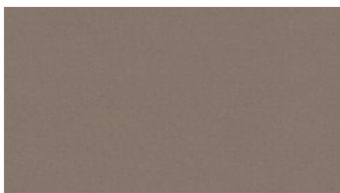


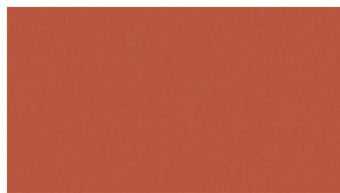


LANE
Möbelstoff

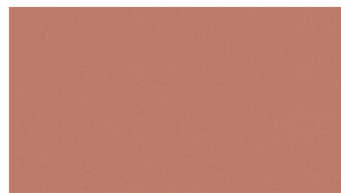
 **svensson**



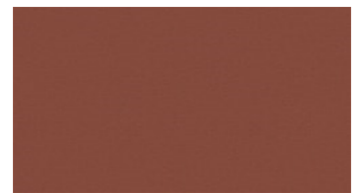
3050



3326



3333



3444



3750



3871



4220



4332



4421



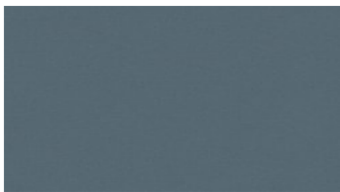
4471



4540



4551



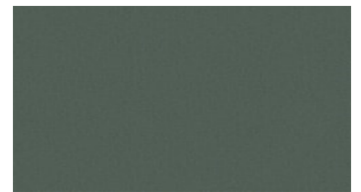
4651



4661



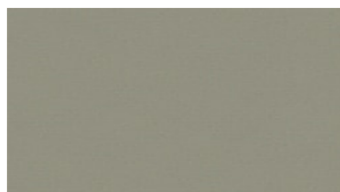
5052



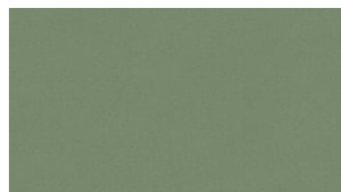
5061



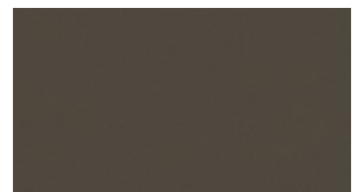
5071



5421



5632



6071

LANE

Möbelstoff

Breite: 140 cm
Gewicht: 350 G/M²
Material: Wolle 100%

Color fastness:
 Against dry rubbing according to
 EN ISO 105-X12:
 - ≥4 (Scale 1-5)
 Gegen Licht nach EN ISO 105-B02
 - ≥5 (Skala 1-8)
 Against wet rubbing according to
 EN ISO 105-X12:
 - ≥3,5 (Scale 1-5)

Scheuerfestigkeit:
 Martindale (Nach: EN ISO 12947-2):
 - 50000 Touren

Wartungsanweisungen:

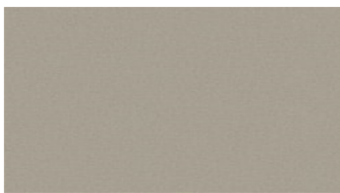


For further information:

Svensson
 511 82 Kinna, Sweden

T: +46 320 20 92 00
 F: +46 320 21 10 10
 E: info@ludvigsvensson.com





6320



6471



6560



6732



6740



6831



6934



6952



8400



8500

LANE

Möbelstoff

Breite: 140 cm
Gewicht: 350 G/M²
Material: Wolle 100%

Color fastness:
Against dry rubbing according to EN ISO 105-X12:
 - ≥4 (Scale 1-5)
Gegen Licht nach EN ISO 105-B02
 - ≥5 (Skala 1-8)
Against wet rubbing according to EN ISO 105-X12:
 - ≥3,5 (Scale 1-5)

Scheuerfestigkeit:
Martindale (Nach: EN ISO 12947-2):
 - 50000 Touren

Wartungsanweisungen:



For further information:

Svensson
 511 82 Kinna, Sweden

T: +46 320 20 92 00
 F: +46 320 21 10 10
 E: info@ludvigsvensson.com

