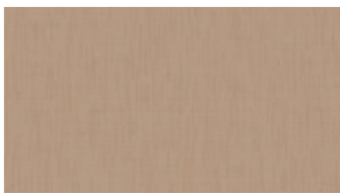


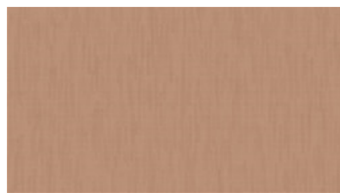


JOLLY RE
Möbelstoff

 **svensson**



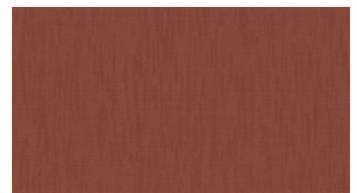
3031



3132



3236



3245



3327



3518



3872



4370



4433



4454



4544



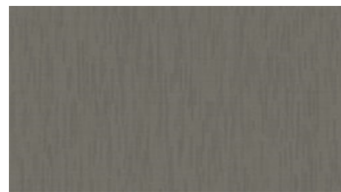
5221



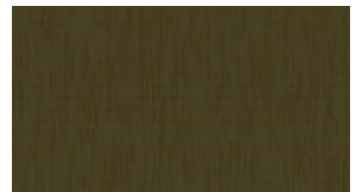
5852



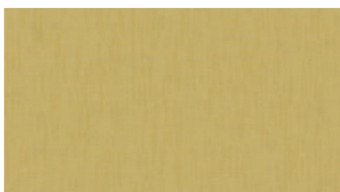
6133



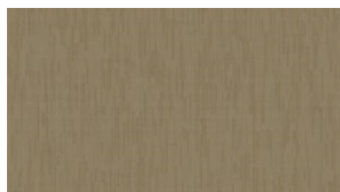
6231



6272



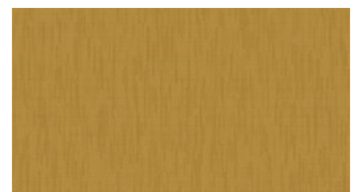
6424



6542



6621



6635

JOLLY RE

Möbelstoff

Breite: 140 cm

Gewicht: 300 G/M²

Material: Recycled Trevira CS 72%
Polyester 28%

Einlaufen: 2 %

Color fastness:

Against dry rubbing according to
EN ISO 105-X12:

- ≥4 (Scale 1-5)

Gegen Licht nach EN ISO 105-B02

- ≥5 (Skala 1-8)

Against wet rubbing according to
EN ISO 105-X12:

- ≥3,5 (Scale 1-5)

Scheuerfestigkeit:

Martindale (Nach: EN ISO 12947-2):

- 40000 Touren

Wartungsanweisungen:



For further information:

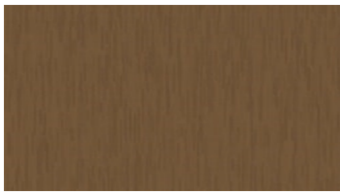
Svensson
511 82 Kinna, Sweden

T: +46 320 20 92 00

F: +46 320 21 10 10

E: info@ludvigsvensson.com





6754



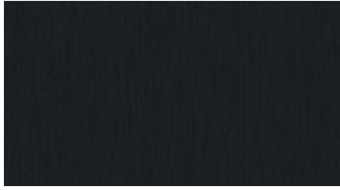
6931



8110



8330



8900

JOLLY RE

Möbelstoff

Breite: 140 cm

Gewicht: 300 G/M²

Material: Recycled Trevira CS 72%
Polyester 28%

Einlaufen: 2 %

Color fastness:

Against dry rubbing according to
EN ISO 105-X12:

- ≥4 (Scale 1-5)

Gegen Licht nach EN ISO 105-B02

- ≥5 (Skala 1-8)

Against wet rubbing according to
EN ISO 105-X12:

- ≥3,5 (Scale 1-5)

Scheuerfestigkeit:

Martindale (Nach: EN ISO 12947-2):

- 40000 Touren

Wartungsanweisungen:



For further information:

Svensson
511 82 Kinna, Sweden

T: +46 320 20 92 00

F: +46 320 21 10 10

E: info@ludvigsvensson.com

