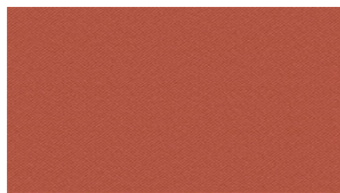


**POLAR**  
Möbelstoff

 **svensson**



3035



3135



3224



3334



3454



3552



4232



4342



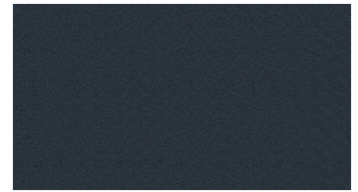
4443



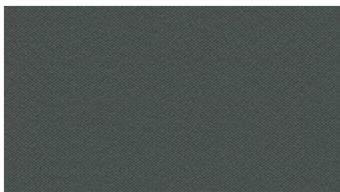
4544



4560



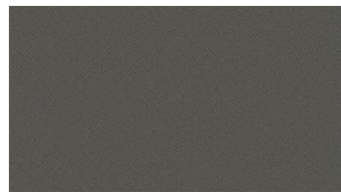
4562



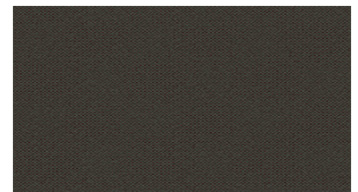
4754



4833



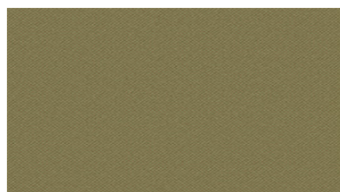
5560



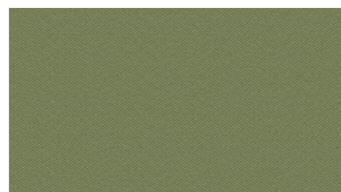
5671



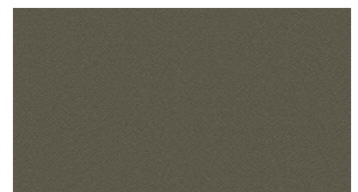
5734



5925



6035



6061

## POLAR

### Möbelstoff

**Breite:** 140 cm  
**Gewicht:** 350 G/M<sup>2</sup>  
**Material:** Wolle 85%  
 Polyamid 15%

**Color fastness:**  
 Against dry rubbing according to  
 EN ISO 105-X12:  
 - ≥4 (Scale 1-5)  
 Gegen Licht nach EN ISO 105-B02  
 - ≥5 (Skala 1-8)  
 Against wet rubbing according to  
 EN ISO 105-X12:  
 - ≥3,5 (Scale 1-5)

**Scheuerfestigkeit:**  
 Martindale (Nach: EN ISO 12947-2):  
 - 100000 Touren

#### Wartungsanweisungen:



#### For further information:

Svensson  
 511 82 Kinna, Sweden

T: +46 320 20 92 00  
 F: +46 320 21 10 10  
 E: info@ludvigsvensson.com





6630



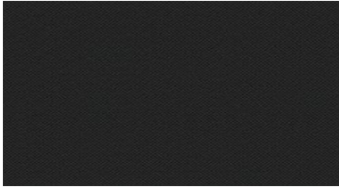
6634



6851



8200



8800

## POLAR

### Möbelstoff

**Breite:** 140 cm  
**Gewicht:** 350 G/M<sup>2</sup>  
**Material:** Wolle 85%  
Polyamid 15%

**Color fastness:**  
*Against dry rubbing according to EN ISO 105-X12:*  
- ≥4 (Scale 1-5)  
*Gegen Licht nach EN ISO 105-B02*  
- ≥5 (Skala 1-8)  
*Against wet rubbing according to EN ISO 105-X12:*  
- ≥3,5 (Scale 1-5)

**Scheuerfestigkeit:**  
*Martindale (Nach: EN ISO 12947-2):*  
- 100000 Touren

**Wartungsanweisungen:**



**For further information:**

Svensson  
511 82 Kinna, Sweden

T: +46 320 20 92 00  
F: +46 320 21 10 10  
E: [info@ludvigsvensson.com](mailto:info@ludvigsvensson.com)

