



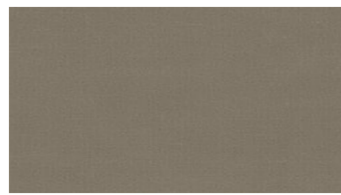
RAMI
Upholstery fabrics



3022



3027



3030



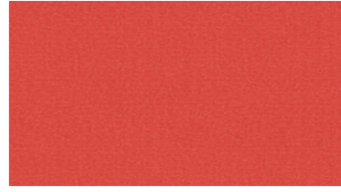
3072



3124



3145



3318



3536



3622



3651



3726



3863



4342



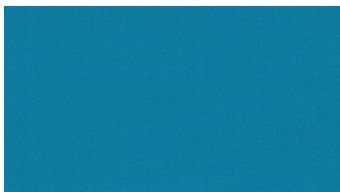
4345



4380



4454



4625



4642



4745



4831

RAMI Upholstery fabrics

Width: 140 cm

Weight: 600 g/m²

Material: Wool 80%
Rami 20%

Color fastness:

Against dry rubbing according to
EN ISO 105-X12:
- ≥4 (Scale 1-5)

Against light according to EN ISO
105-B02

- ≥5 (Scale 1-8)

Against wet rubbing according to
EN ISO 105-X12:

- ≥3,5 (Scale 1-5)

Abrasion resistance:

Martindale (According to EN ISO
12947-2):
- 70000 rubs

Care instructions:



For further information:

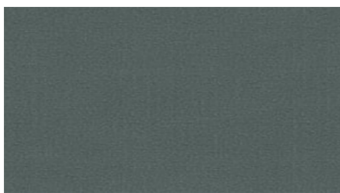
Svensson
511 82 Kinna, Sweden

T: +46 320 20 92 00

F: +46 320 21 10 10

E: info@ludvigsvensson.com





4861



5028



5872



5936



6054



6072



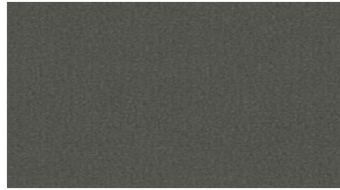
6165



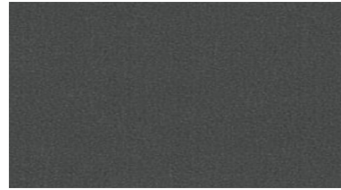
6331



6336



6370



6380



6636



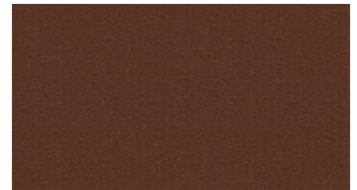
6727



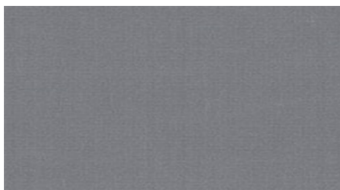
6810



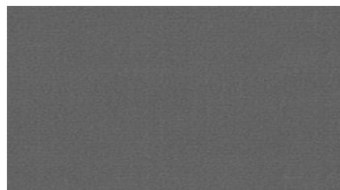
6918



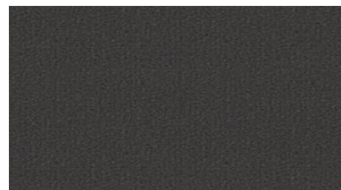
6972



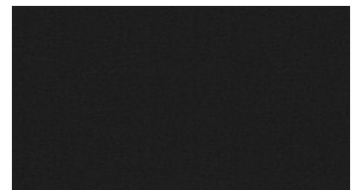
8200



8500



8700



8900

RAMI

Upholstery fabrics

Width: 140 cm

Weight: 600 g/m²

Material: Wool 80%
Rami 20%

Color fastness:

Against dry rubbing according to
EN ISO 105-X12:
- ≥4 (Scale 1-5)

Against light according to EN ISO
105-B02

- ≥5 (Scale 1-8)

Against wet rubbing according to
EN ISO 105-X12:

- ≥3,5 (Scale 1-5)

Abrasion resistance:

Martindale (According to EN ISO
12947-2):
- 70000 rubs

Care instructions:



For further information:

Svensson
511 82 Kinna, Sweden

T: +46 320 20 92 00

F: +46 320 21 10 10

E: info@ludvigsvensson.com

