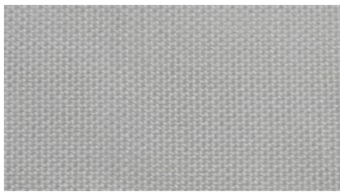
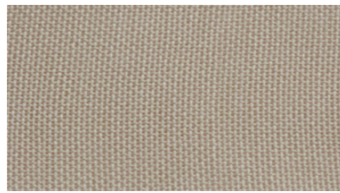




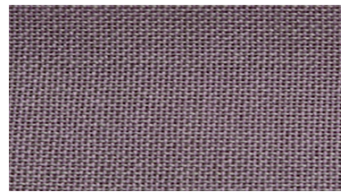
SALT
Hanging fabrics



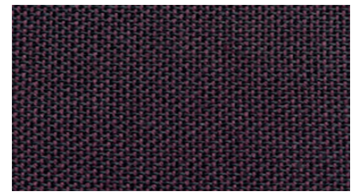
1500



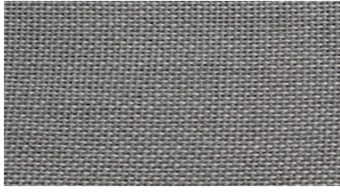
3210



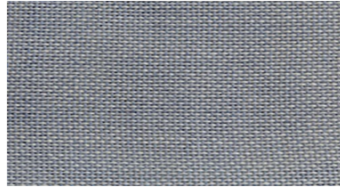
3932



4062



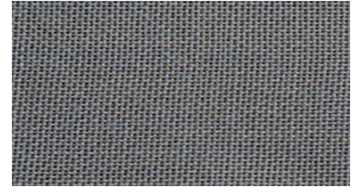
4230



4321



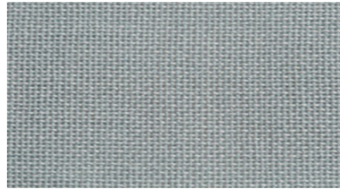
4340



4342



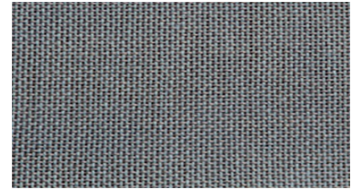
4350



4411



4472



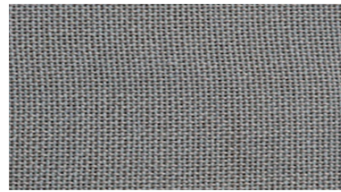
4531



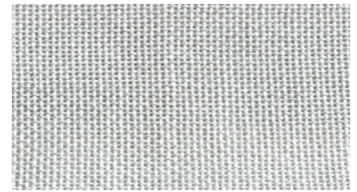
4540



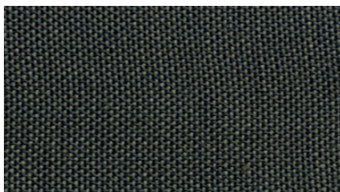
4562



4621



5021



5071



5510



5621



6311

SALT Hanging fabrics

Width: 300 cm

Weight: 190 g/m²

Material: Trevira CS 100%

Shrinkage: 2 %

Color fastness:

Against light according to EN ISO 105-B02

- ≥ 5 - 7 (Scale 1-8)

Against washing according to EN ISO 105-C06

- ≥ 5 (Scale 1-5)

Care instructions:



For further information:

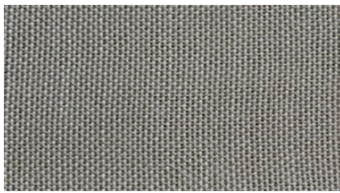
Svensson
511 82 Kinna, Sweden

T: +46 320 20 92 00

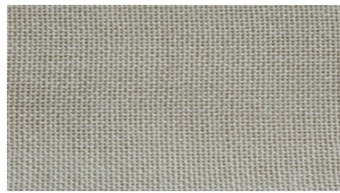
F: +46 320 21 10 10

E: info@ludvigsvensson.com

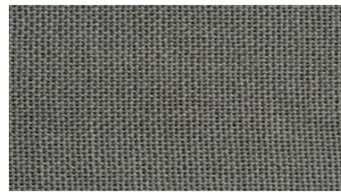




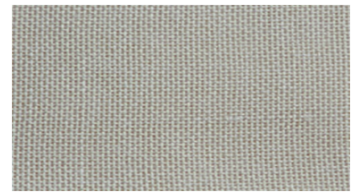
6331



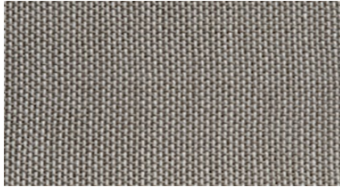
6420



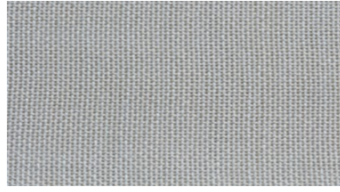
6441



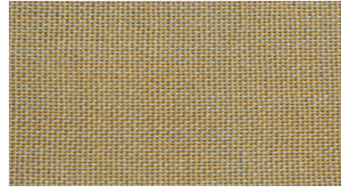
6510



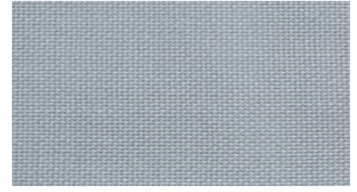
6520



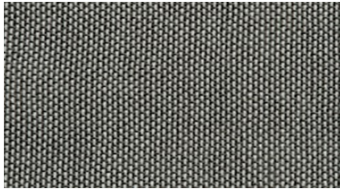
6710



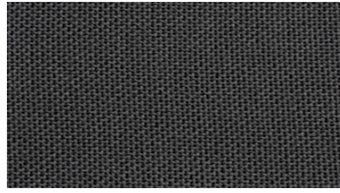
6815



8110



8440



8660

SALT

Hanging fabrics

Width: 300 cm
Weight: 190 g/m²
Material: Trevira CS 100%
Shrinkage: 2 %

Color fastness:
Against light according to EN ISO 105-B02
- ≥ 5 - 7 (Scale 1-8)
Against washing according to EN ISO 105-C06
- ≥ 5 (Scale 1-5)

Care instructions:



For further information:

Svensson
511 82 Kinna, Sweden

T: +46 320 20 92 00
F: +46 320 21 10 10
E: info@ludvigsvensson.com

