



JOLLY RE
Upholstery fabrics



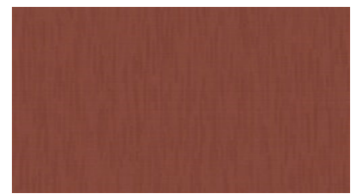
3031



3132



3236



3245



3327



3518



3872



4370



4433



4454



4544



5221



5852



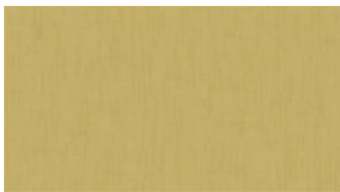
6133



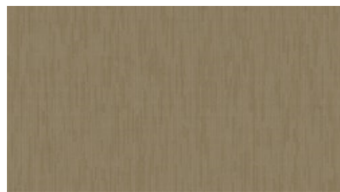
6231



6272



6424



6542



6621



6635

JOLLY RE Upholstery fabrics

Width: 140 cm

Weight: 300 g/m²

Material: Recycled Trevira CS 72%
Trevira CS 28%

Shrinkage: 2 %

Color fastness:

Against dry rubbing according to
EN ISO 105-X12:

- ≥4 (Scale 1-5)

Against light according to EN ISO
105-B02

- ≥5 (Scale 1-8)

Against wet rubbing according to
EN ISO 105-X12:

- ≥3,5 (Scale 1-5)

Abrasion resistance:

Martindale (According to EN ISO

12947-2):

- 40000 rubs

Care instructions:



For further information:

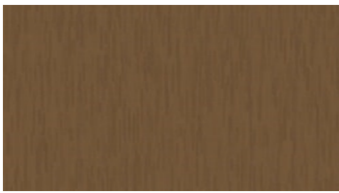
Svensson
511 82 Kinna, Sweden

T: +46 320 20 92 00

F: +46 320 21 10 10

E: info@ludvigsvensson.com





6754



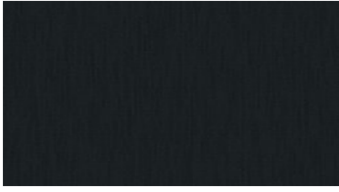
6931



8110



8330



8900

JOLLY RE Upholstery fabrics

Width: 140 cm

Weight: 300 g/m²

Material: Recycled Trevira CS 72%
Trevira CS 28%

Shrinkage: 2 %

Color fastness:

*Against dry rubbing according to
EN ISO 105-X12:*

- ≥4 (Scale 1-5)

*Against light according to EN ISO
105-B02*

- ≥5 (Scale 1-8)

*Against wet rubbing according to
EN ISO 105-X12:*

- ≥3,5 (Scale 1-5)

Abrasion resistance:

*Martindale (According to EN ISO
12947-2):*

- 40000 rubs

Care instructions:



For further information:

Svensson
511 82 Kinna, Sweden

T: +46 320 20 92 00

F: +46 320 21 10 10

E: info@ludvigsvensson.com

