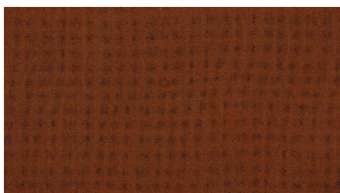
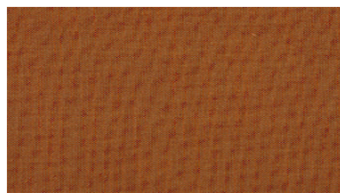




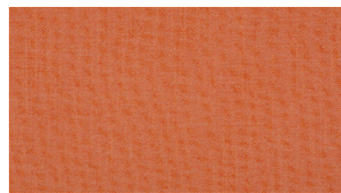
KHAKI
Möbeltyg



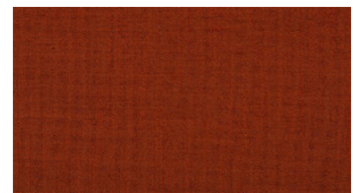
3035



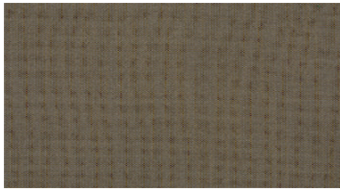
3044



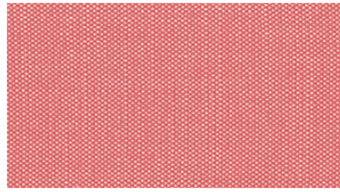
3234



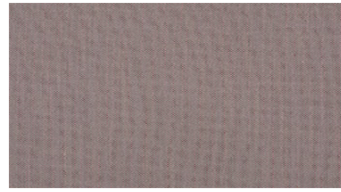
3236



3550



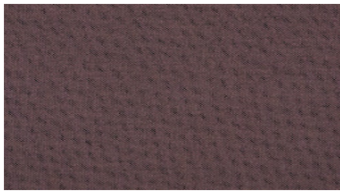
3617



3651



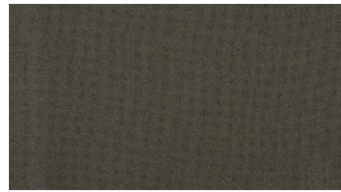
3745



3952



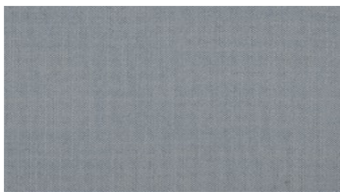
4163



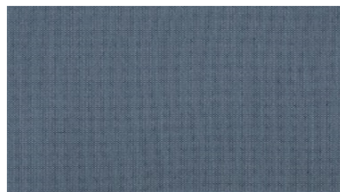
4360



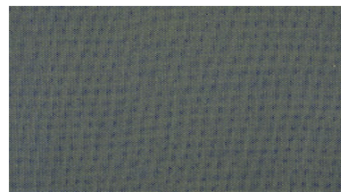
4372



4433



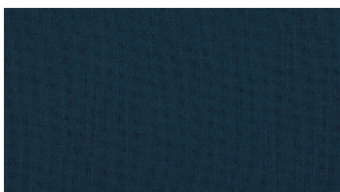
4444



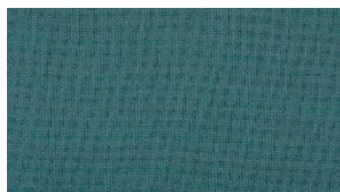
4452



4550



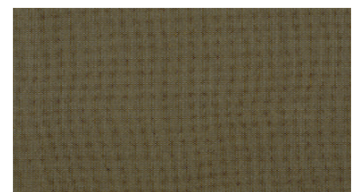
4554



4653



4745



4760

KHAKI

Möbeltyg

Bredd: 140 cm
Vikt: 360 g/m²
Material: Trevira CS 100%
Krympning: 2 %

Färghärdighet:
Mot gnidning torr enligt EN ISO 105-X12:
 - 4-5 (Skala 1-5)
Mot ljus enligt EN ISO 105-B02
 - 5-7 (Skala 1-8)
Mot gnidning våt enligt EN ISO 105-X12:
 - 3-4 (Skala 1-5)

Nötningshärdighet:
Martindale enligt EN ISO 12947-2:
 - 50000 varv

Skötselansvisning:



For further information:

Svensson
 511 82 Kinna, Sweden

T: +46 320 20 92 00
 F: +46 320 21 10 10
 E: info@ludvigsvensson.com

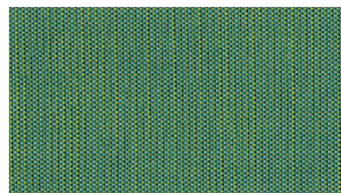




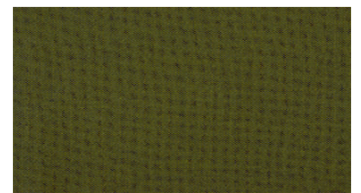
5445



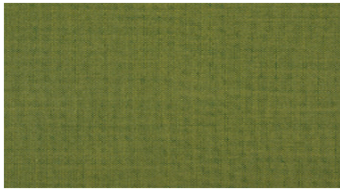
5451



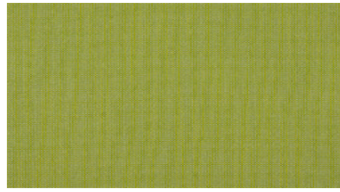
5535



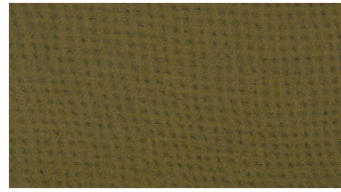
5863



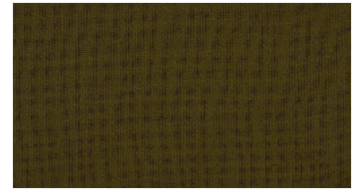
6043



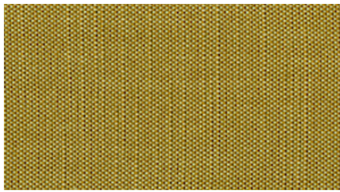
6235



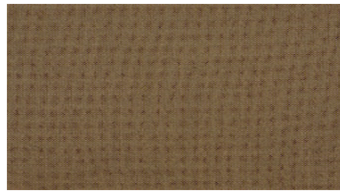
6252



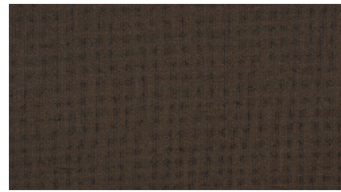
6272



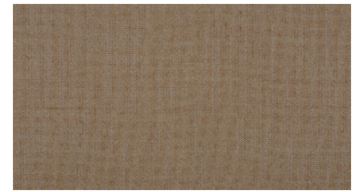
6544



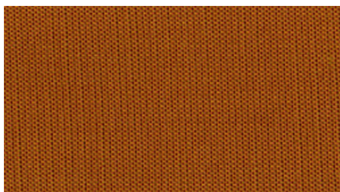
6560



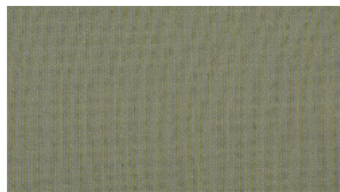
6662



6750



6835



6841



8500

KHAKI

Möbeltyg

Bredd: 140 cm
Vikt: 360 g/m²
Material: Trevira CS 100%
Krympning: 2 %

Färghärdighet:
Mot gnidning torr enligt EN ISO 105-X12:
 - 4-5 (Skala 1-5)
Mot ljus enligt EN ISO 105-B02
 - 5-7 (Skala 1-8)
Mot gnidning våt enligt EN ISO 105-X12:
 - 3-4 (Skala 1-5)

Nötningshärdighet:
Martindale enligt EN ISO 12947-2:
 - 50000 varv

Skötselansvisning:



For further information:

Svensson
 511 82 Kinna, Sweden

T: +46 320 20 92 00
 F: +46 320 21 10 10
 E: info@ludvigsvensson.com

