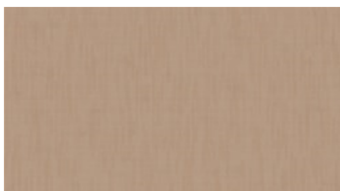


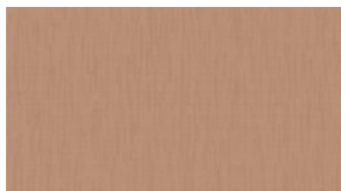


JOLLY RE
Möbeltyg

 **svensson**



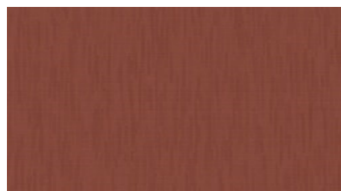
3031



3132



3236



3245



3327



3518



3872



4370



4433



4454



4544



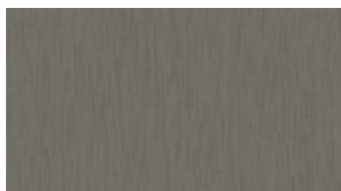
5221



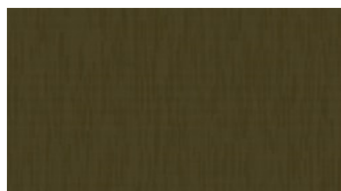
5852



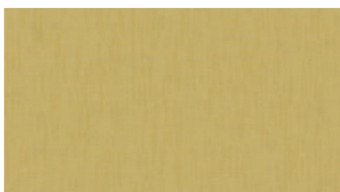
6133



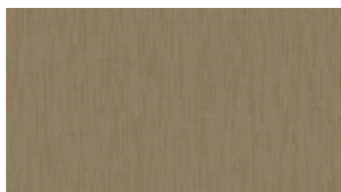
6231



6272



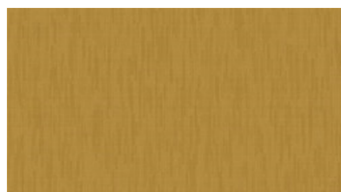
6424



6542



6621



6635

JOLLY RE

Möbeltyg

Bredd: 140 cm

Vikt: 300 g/m²

Material: Återvunnen Trevira CS 72% - 40000 varv
Trevira CS 28%

Krympning: 2 %

Färghärdighet:

Mot gnidning torr enligt EN ISO 105-X12:

- ≥4 (Skala 1-5)

Mot ljus enligt EN ISO 105-B02

- ≥5 (Skala 1-8)

Mot gnidning våt enligt EN ISO 105-X12:

- ≥3,5 (Skala 1-5)

Nötningshärdighet:

Martindale enligt EN ISO 12947-2:

Skötselanvisning:



For further information:

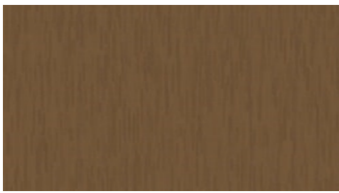
Svensson
511 82 Kinna, Sweden

T: +46 320 20 92 00

F: +46 320 21 10 10

E: info@ludvigsvensson.com





6754



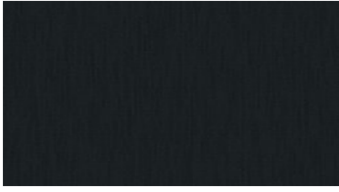
6931



8110



8330



8900

JOLLY RE

Möbeltyg

Bredd: 140 cm

Vikt: 300 g/m²

Material: Återvunnen Trevira CS 72% - 40000 varv
Trevira CS 28%

Krympning: 2 %

Färghärdighet:

Mot gnidning torr enligt EN ISO 105-X12:

- ≥4 (Skala 1-5)

Mot ljus enligt EN ISO 105-B02

- ≥5 (Skala 1-8)

Mot gnidning våt enligt EN ISO 105-X12:

- ≥3,5 (Skala 1-5)

Nötningshärdighet:

Martindale enligt EN ISO 12947-2:

Skötselanvisning:



For further information:

Svensson
511 82 Kinna, Sweden

T: +46 320 20 92 00

F: +46 320 21 10 10

E: info@ludvigsvensson.com

